

PROFUND SCALE PREDICTS MORTALITY IN HEART FAILURE ?

Inclusion criteria

- Main diagnosis heart failure
- NT- proBNP >300 pg/mL

Exclusion criteria

- Signature of informed consent not obtained

N= 1600

START

Data collection
Barthel index
PROFUND scale
MAGGIC scale
MEESSI scale

- Hospital readmission
- Mortality

1 MONTH

6 MONTHS

- Hospital readmission
- Mortality

- Hospital readmission
- Mortality

1 YEAR

01

02

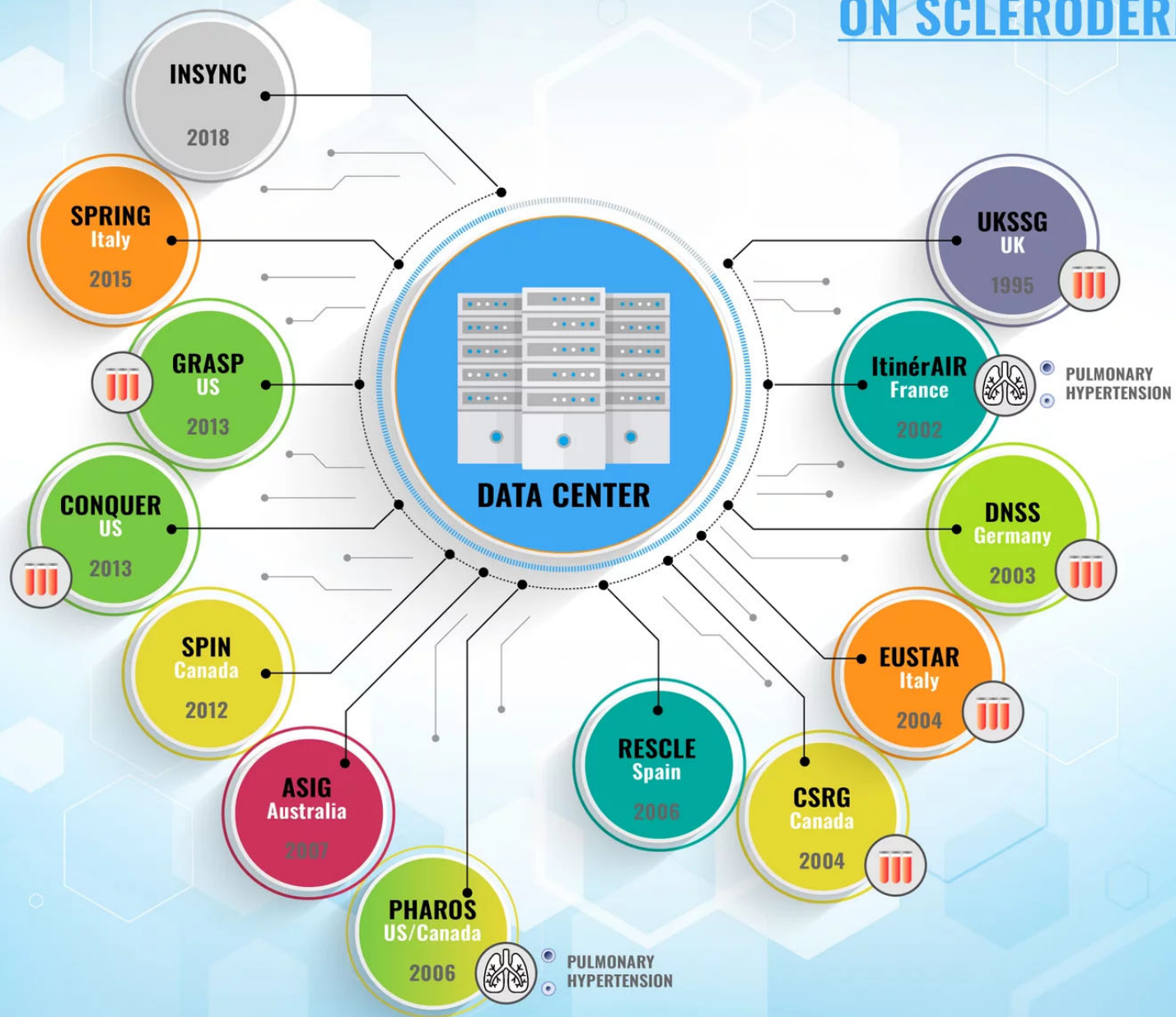
03

04

05



NATIONAL AND INTERNATIONAL REGISTRIES ON SCLERODERMA



FIGHTING THE TRAGEDY OF NURSING HOMES IN THE COVID-19



- New pandemic virus
- Collapse of health and social care systems



- Isolated
- Underfinanced
- Understaffed
- Undertrained



- Frail
- Immunosenescent
- Dependent

THE 'PERFECT STORM'



- Global homogeneous plans
- Residents' vaccination
- Routine viral testing
- Social awareness



- Staff reinforcement
- Staff training
- Structural and functional adaptations



- Early recognition/confirmation
- Appropriate stratification and standard care
- Management of co-morbidities



POLITICIANS - SOCIETY



NURSING HOMES MANAGERS



CLINICIANS

COORDINATED AND COHERENT MEASURES TO FIGHT THE TRAGEDY