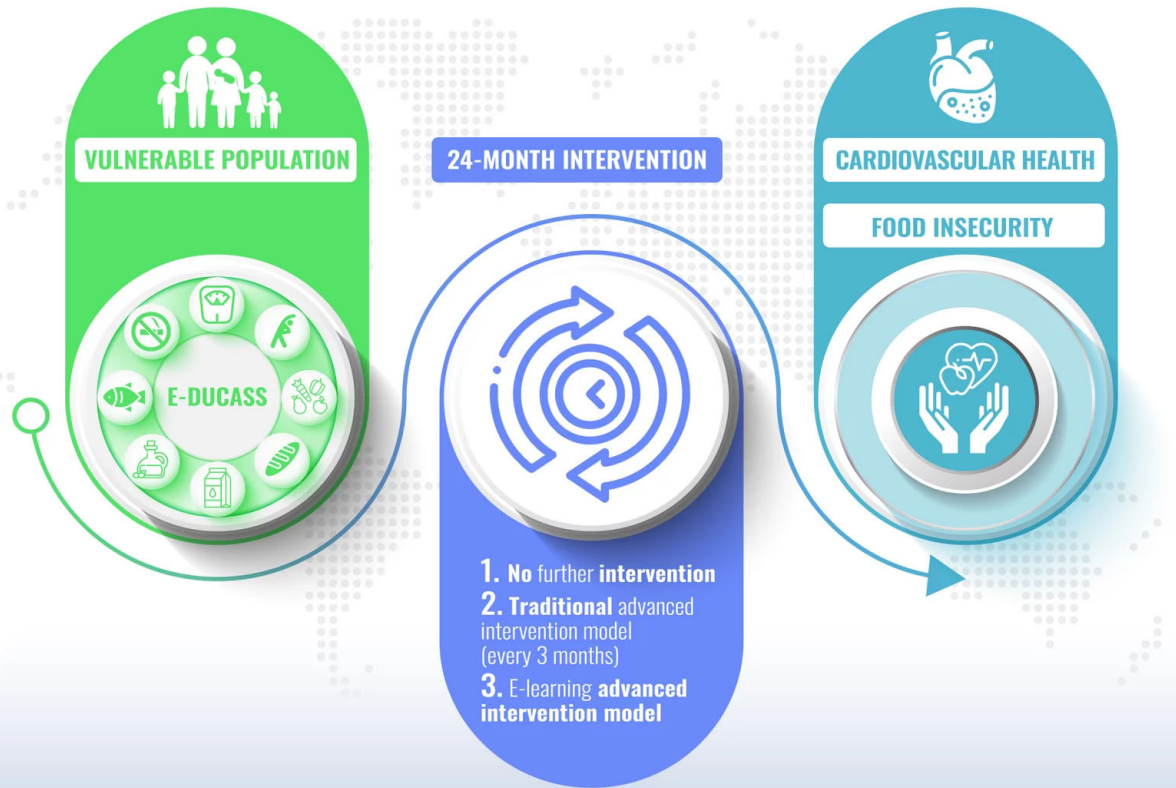
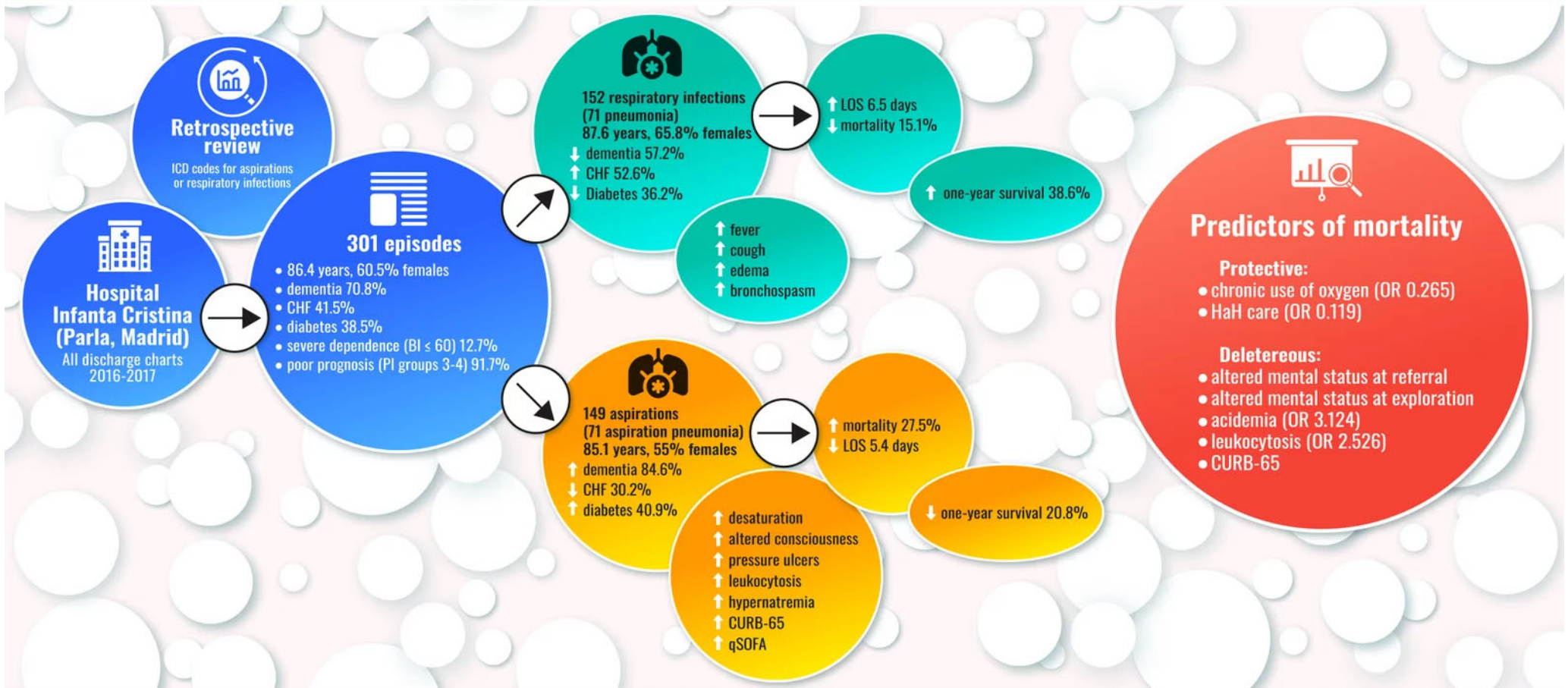


# EDUCATIONAL STRATEGY TO IMPROVE CARDIOVASCULAR HEALTH AND MITIGATE FOOD INSECURITY: RATIONALE FOR THE E-DUCASS PROGRAM



The **E-DUCASS** program aims to explore the best strategy to improve **cardiovascular health** and **food** in vulnerable populations in a scientific, efficient, safe and sustainable manner.

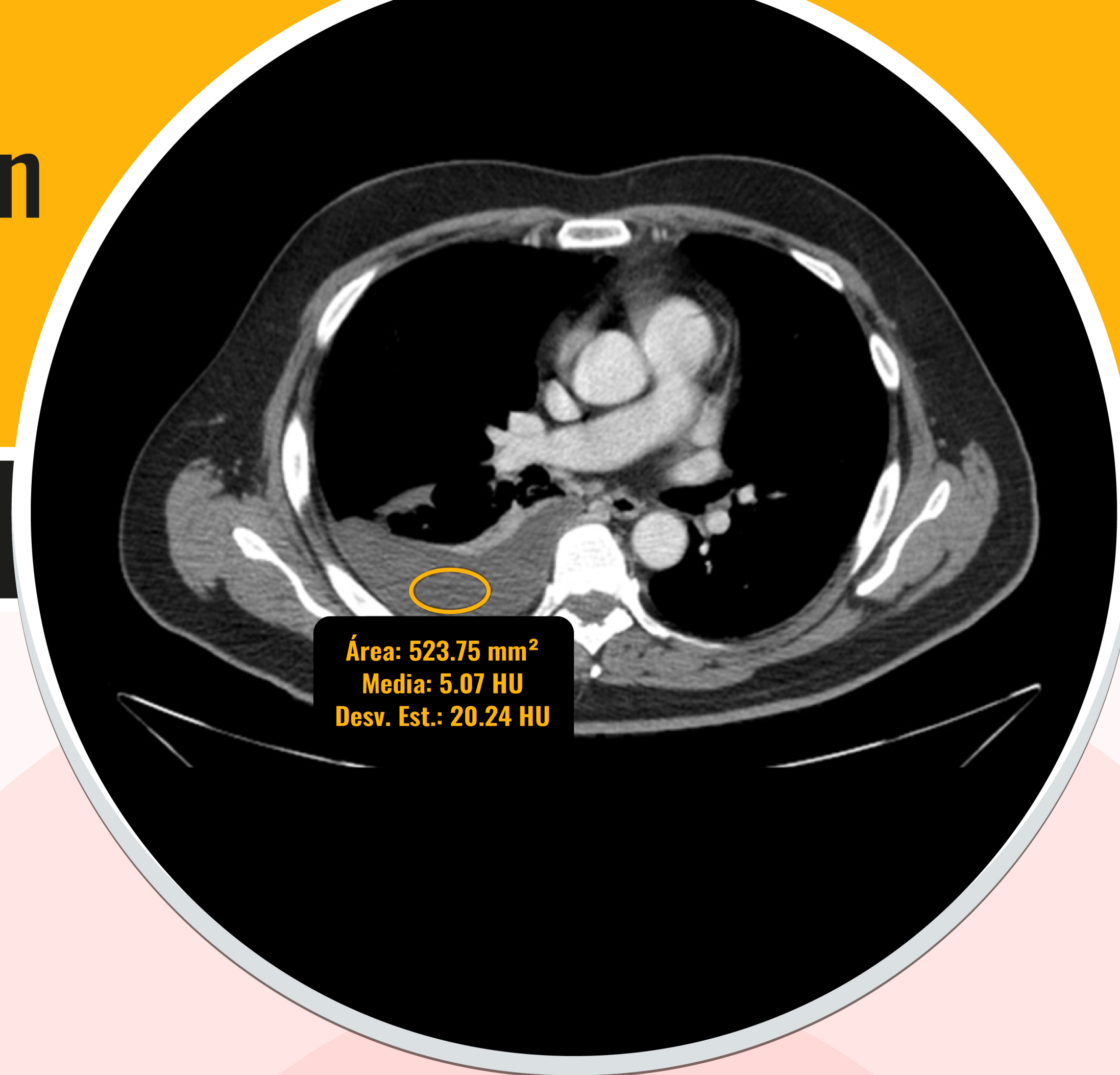
# Respiratory infections in nursing home residents: a retrospective analysis of characteristics and prognostic factors



**ICD:** International Statistical Classification of Diseases and Related Health Problems; **CHF:** chronic heart failure; **BI:** Barthel Index; **PI:** Profund Index; **CURB-65:** CURB-65 score; **qSOFA:** quick Sequential Organ Failure Assessment Index; **HaH:** hospital at home; **LOS:** length of stay; **OR:** odds ratio.

# Pleural fluid attenuation values (HU)

# Computed tomography



100 transudates  
217 exudates  
≥4 HU

EXUDATE

Sensitivity  
69%

Specificity  
66%

Likelihood ratio  
positive 2

Likelihood ratio  
negative 0.47

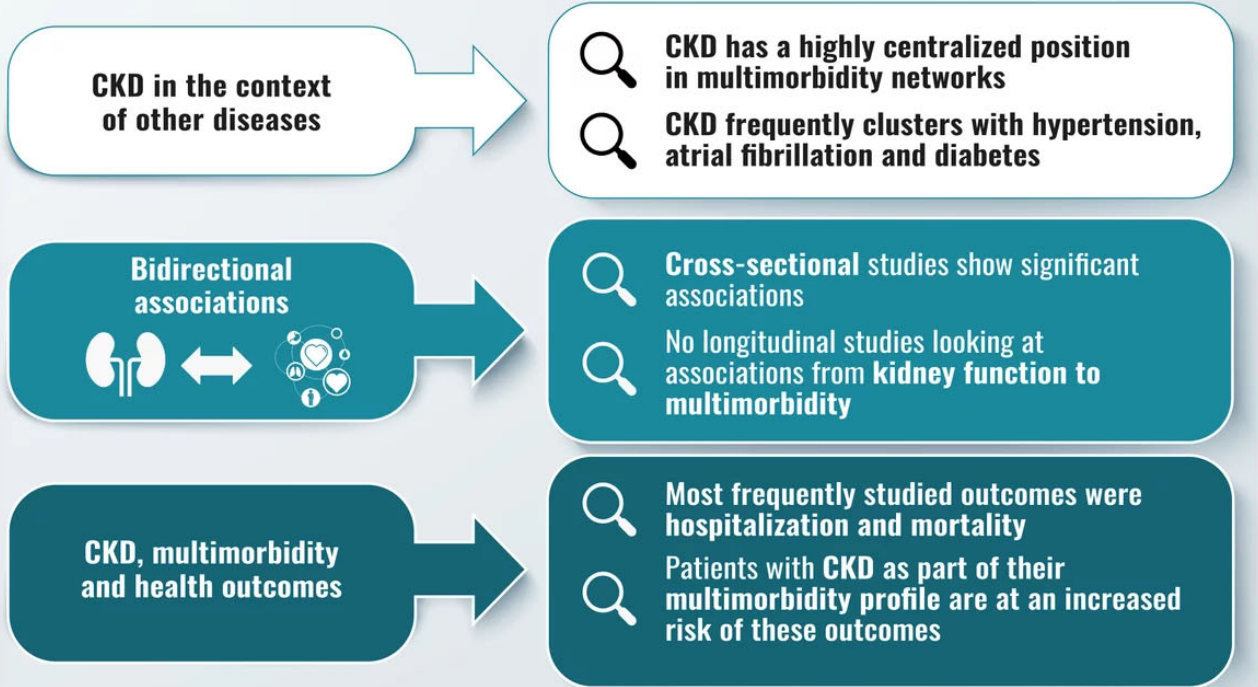
Pleural fluid attenuation values should not influence decision to perform thoracentesis

# The interplay between **kidney function** and **multimorbidity**: a scoping review

## METHODS

- 26 studies from MEDLINE
- Included clinical and lab-based measures of kidney function
- Defined multimorbidity as  $\geq 2$  chronic diseases

## RESEARCH LINE



## MAIN FINDINGS

- CKD has a highly centralized position in multimorbidity networks
- CKD frequently clusters with hypertension, atrial fibrillation and diabetes
- Cross-sectional studies show significant associations
- No longitudinal studies looking at associations from kidney function to multimorbidity
- Most frequently studied outcomes were hospitalization and mortality
- Patients with CKD as part of their multimorbidity profile are at an increased risk of these outcomes

## CONCLUSIONS

- Reviewed evidence points towards relevant and frequent interactions between CKD and multimorbidity
- Further longitudinal and methodologically rigorous studies are needed



CKD: chronic kidney disease.